

Ferdinand Stükerjuergen Inc. dba.
Stuke Iowa



Solution in plastics

WELCOME!

Stuke
Iowa

GET THE CUSTOMIZED
**PLASTIC PARTS /
PROFILES**
YOU WANT



MADE IN IOWA, USA

Are you tired about poor quality from your existing plastic suppliers?

We hear you!

That is why we focus on quality and reliability.

MORE THAN 25 YEARS



Since 1992
Made in Iowa



50 YEARS EXPERIENCE



With reliable German plastic engineering experience
for more than 50 years.

★ QUALITY GUARANTEE ★



HISTORY STUEKERJUERGEN GROUP



1967

Ferdinand
Stükerjürgen
GmbH & Co.KG



Agricultural
Construction
Technical industry

1987

SWP-
Systems
GmbH



(Spirally wound pipes)
Sewerage

1992

Ferdinand
Stükerjuergen
Inc. dba.
Stuke Iowa



Aviation
Agricultural
Technical
Construction
Food & Beverage

1997

Stükerjürgen
Aerospace
Composites
GmbH & Co.KG



Aviation
Yachting
Industrial solutions

FOUNDER

Ferdinand
Stükerjürgen



SINCE 1997

Frank
Stükerjürgen



QUALITY MANAGEMENT

Stuke
Iowa

ISO 9001

**SMITHERS**
QUALITY ASSESSMENTS

CERTIFICATE OF APPROVAL

This is to Certify that the Quality Management System of:

Ferdinand Stuekerjuergen, Inc.
DBA Stuke Iowa Plastics
1498 Highway 16
Houghton, IA 52631

has been assessed and approved by Smithers Quality Assessments, Inc., to the following quality management system standards and requirements:

ISO 9001:2008 without Design

The Quality Management System is Applicable to:
Production and sales of parts and assemblies for agricultural and industrial customers.

Approval Certificate Number: 09.267.3	Original Approval: September 24, 2009
	Current Certificate: August 28, 2015
	Certificate Expires: August 27, 2018


The use of the accreditation mark indicates accreditation in respect of those activities covered by the above certificate number.


on behalf of SQA - J. Michael Hochschwender, CEO

The approval is subject to the company maintaining its system to the required standards which will be monitored by Smithers Quality Assessments, Inc., 121 S. Main St. Suite 300, Akron, Ohio 44308, USA.

**ANAB**
ACCREDITED
REGISTRATION BODY

Form SQA-13.04 (2012) Revised 07/09/14 (ISO-9175)-Single Site. Current Certificate Revision Date: August 28, 2015

AS 9100

**SMITHERS**
QUALITY ASSESSMENTS

CERTIFICATE OF APPROVAL

This is to Certify that the Quality Management System of:

Ferdinand Stuekerjuergen, Inc.
DBA Stuke Iowa Plastics
1498 Highway 16
Houghton, IA 52631

has been assessed to and approved in accordance with the requirements of AS9104/1:2012-01 by Smithers Quality Assessments, an accredited Aerospace Registration Management Program Certification Body, under the ICOP scheme, to the following quality management system standards and requirements:

AS9100:2016

The Single Site Certification Structure Quality Management System is Applicable to:
Production and sales of parts and assemblies for the aerospace industry.

Approval Certificate Number: 09.267.1	Original Approval: September 24, 2009
	Current Certificate: August 28, 2015
	Certificate Expires: August 27, 2018


The use of the accreditation mark indicates accreditation in respect of those activities covered by the above certificate number.


on behalf of SQA - J. Michael Hochschwender, CEO

The approval is subject to the company maintaining its system to the required standards which will be monitored by Smithers Quality Assessments, Inc., 121 S. Main St. Suite 300, Akron, Ohio 44308, USA.

**ANAB**
ACCREDITED
REGISTRATION BODY

Form SQA-13.04 (2012) Revised 07/09/14 (AS9100)-Single Site. Current Certificate Revision Date: January 19, 2016

QUALITY IS KEY



★ QUALITY GUARANTEE ★

We stand for
quality.



We are certified
ISO 9001.



We are certified
AS 9100.

REFERENCES AVIATION



AIRBUS

A310 / A320 /
A330 / A350



Interior (cabin, lavatory)

Toilet seat assemblies,
3D printed parts

BOING

B737, B787,
B777



Interior (cabin, lavatory)

Toilet seat assemblies, trim
pieces, extrusion profiles,
injection-molding parts

BOMBARDIER

BOMBARDIER CRJ,
Q400



Interior (cabin)

Seat rail covers,
raceway profiles

MJET

BOMBARDIER CRJ,
Q400



Interior (cabin)

Toilet seat assemblies,
3D printed parts

FIELDS



AGRICULTURAL



AVIATION



CONSTRUCTION



FOOD & BEVERAGE



TECHNICAL



INDIVIDUAL FIELD



TYPES OF PLASTICS



ABS

PA

PEI (ULTEM)

PVC

HDPO

PC

PES

TPE

HIPS

PE

PP

TPV

FULL SERVICE



DESIGN
(R&D)



Germany



2D/3D

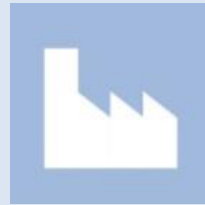
TOOL



Germany or
Iowa partners



MANUFACTURING



Qualification / Testing
(Germany)



SURFACE



Logistics

PLASTIC PARTS MANUFACTURING



EXTRUSION



INJECTION MOLDING



3D PRINTING



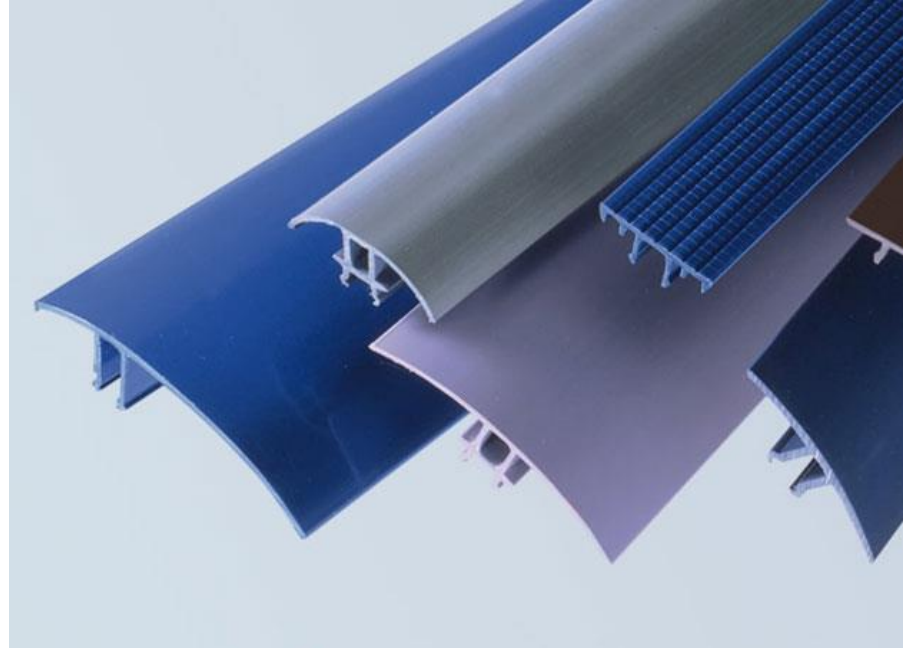
EXTRUSION

Stuke
Iowa



EXTRUSION

**Stuke
Iowa**



INJECTION MOLDING

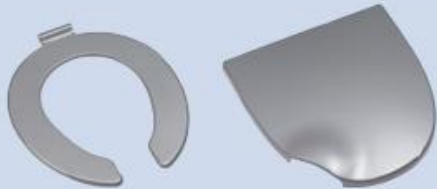


INJECTION MOLDING

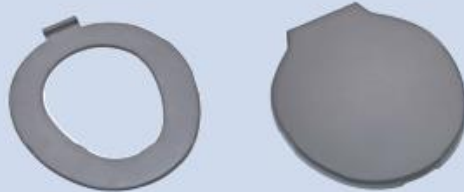
A320



A330 / A340



B737 / SAC



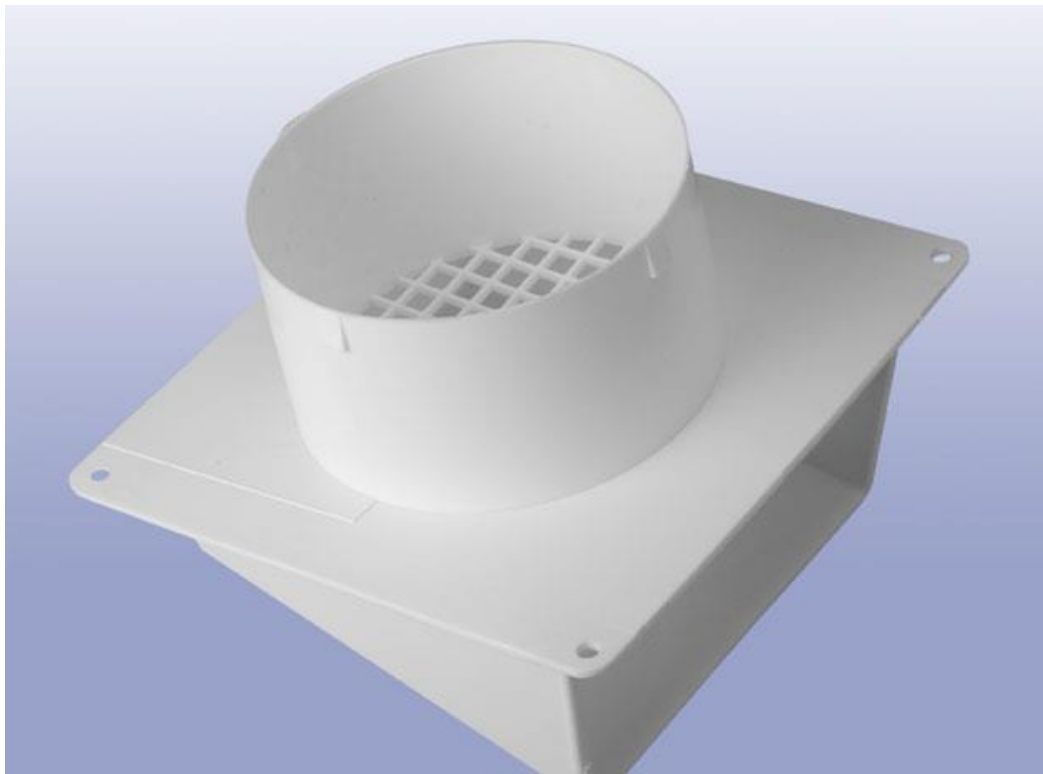
INJECTION MOLDING

**Stuke
Iowa**



INJECTION MOLDING

Stuke
Iowa



INJECTION MOLDING

Stuke
Iowa



3D PRINTING



3D PRINTING

FDM (Fused Deposition Modeling)

- ABS
- PC
- PEI (Ultem 9085 – aviation authorized in acc. to FAR 25.853 and ABD0031)



- No tool costs
- Reduction of development time
- Fast processing



MAX. COMPONENT SIZE:

PEI / ABS

→ 914 x 609 x 914 [mm]

→ 36" x 24" x 36" [inch]

PC

→ 406 x 355 x 406 [mm]

→ 16" x 14" x 16" [inch]



SERVICES

**Stuke
Iowa**

SURFACE FINISHING



ASSEMBLY & PACKAGING



SURFACE FINISHING

**Stuke
Iowa**

In-house painting

The painting is performed in accordance with the customers' requirements.

By close partnership with our paint suppliers we are able to match your color requirements.



Finished Component

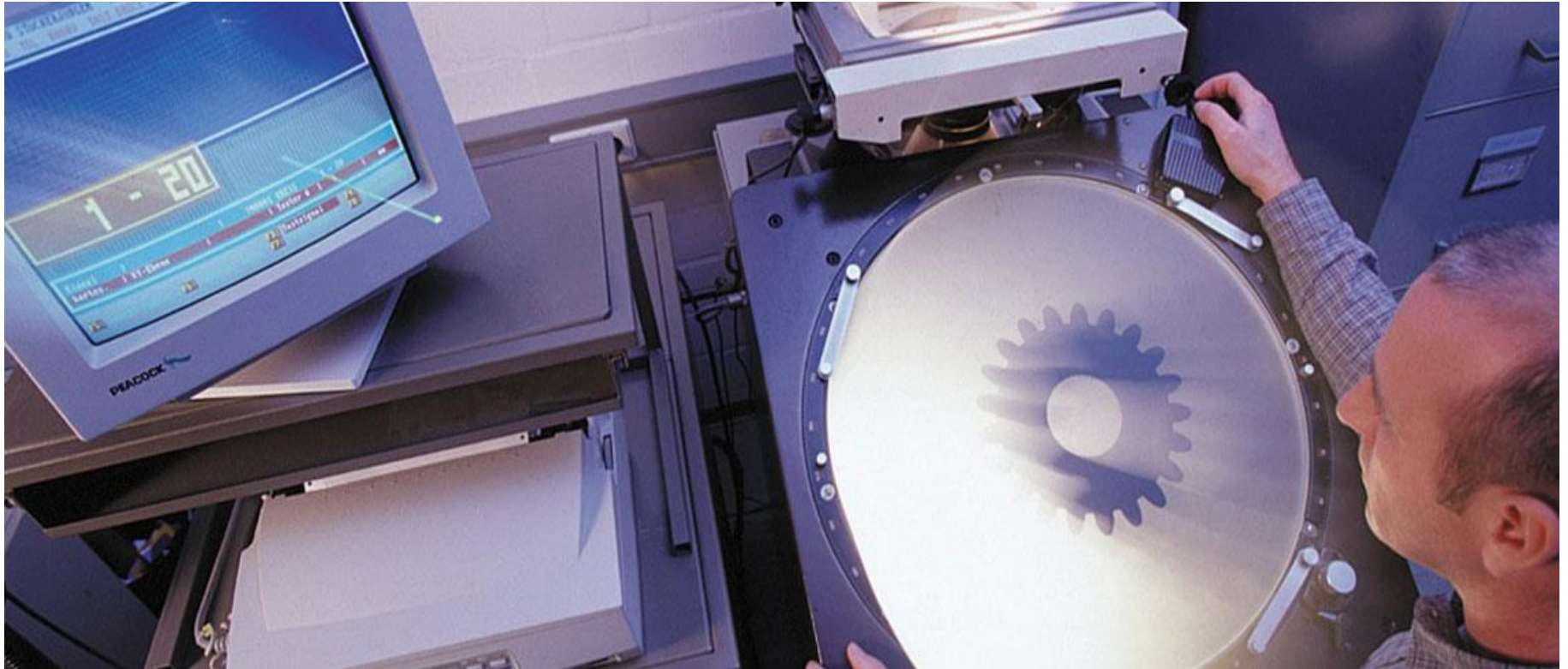
Ready to install or use including any metallic hardware and/or special labeling, packaging

- Manual labor
- Drilling
- Sanding
- Cutting
- Sawing



QUALITY MANAGEMENT

**Stuke
Iowa**



QUALITY MANAGEMENT



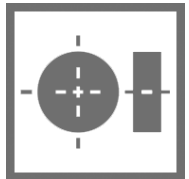
Analysis (in Germany)

Analysis during manufacturing

Analysis during component development

Partnership with external laboratories for the performance of following test and services:

- Burn test in acc. with CS/FAR 25.853
- Color measurement
- Roughness measurement
- Moisture test
- Paint adhesion test
- Projector measurement
- Static test
- 3D measuring



QUALITY MANAGEMENT



Analysis (in Germany)

Analysis during manufacturing

Analysis during component development

Partnership with external laboratories for the performance of following test and services:

- Production monitoring and support
- Dimensional analysis
- Visual check



QUALITY MANAGEMENT



Analysis (in Germany)

Analysis during manufacturing

Analysis during component development

Partnership with external laboratories for the performance of following test and services:

- Sample parts
- Research of new materials (in partnership with our German subsidiaries)
- Integration of new processes (in partnership with our German subsidiaries)
- Quality overview with customers
- First article inspection reports in acc. with AS9102



QUALITY MANAGEMENT



Analysis (in Germany)

Analysis during manufacturing

Analysis during component development

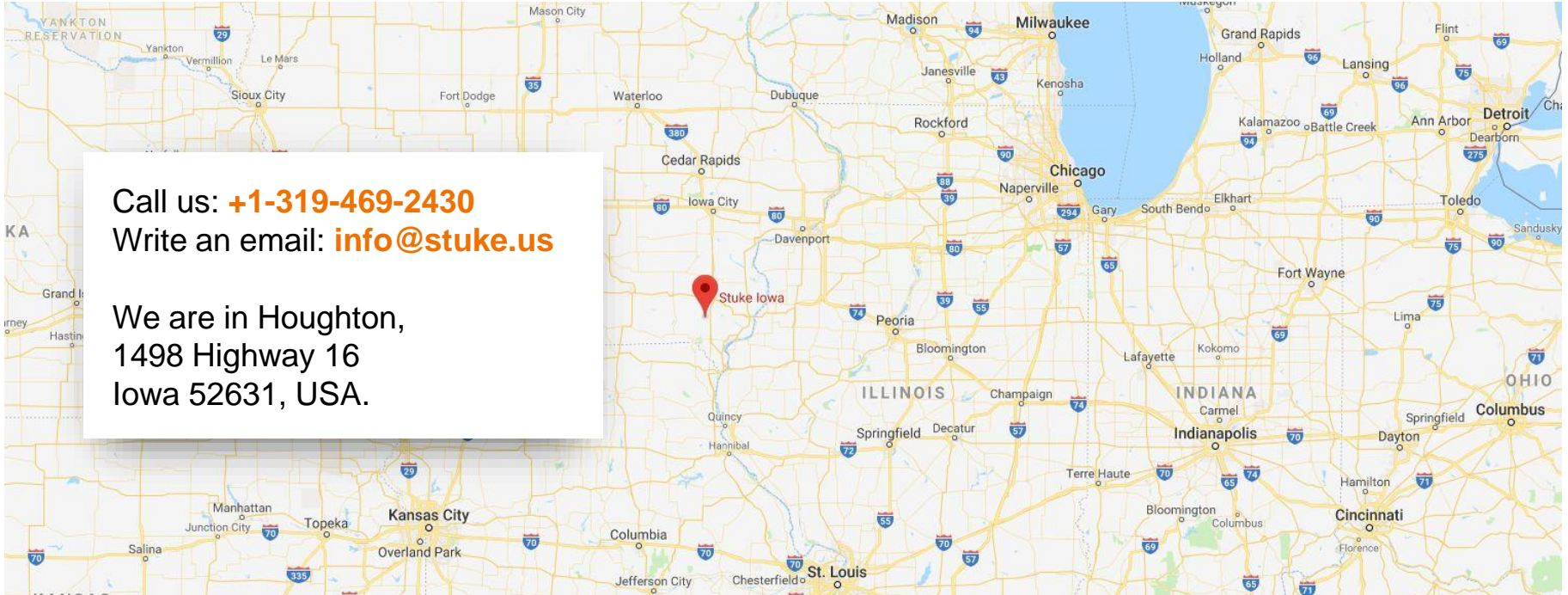
Partnership with external laboratories for the performance of following test and services:

- Smoke, toxicity, heat release
- Static test
- Environmental test (DO160)
- Fungus resistance test
- Shaker test
- Moisture test



WHERE IS STUKE IOWA?

**Stuke
Iowa**



Call us: **+1-319-469-2430**

Write an email: **info@stuke.us**

We are in Houghton,
1498 Highway 16
Iowa 52631, USA.

NOW IT'S YOUR TURN!

Stuke
Iowa

TELL US YOUR
**GOALS, NEEDS, AND
REQUIREMENTS.**



info@stuke.us